

DOUBLESTAR

Doublestar Tire, Innovating the World



Edition 2024/03

DOUBLESTAR GROUP
www.doublestartyre.com



PCR CATALOGUE



BRIEF INTRODUCTION OF DOUBLESTAR GROUP

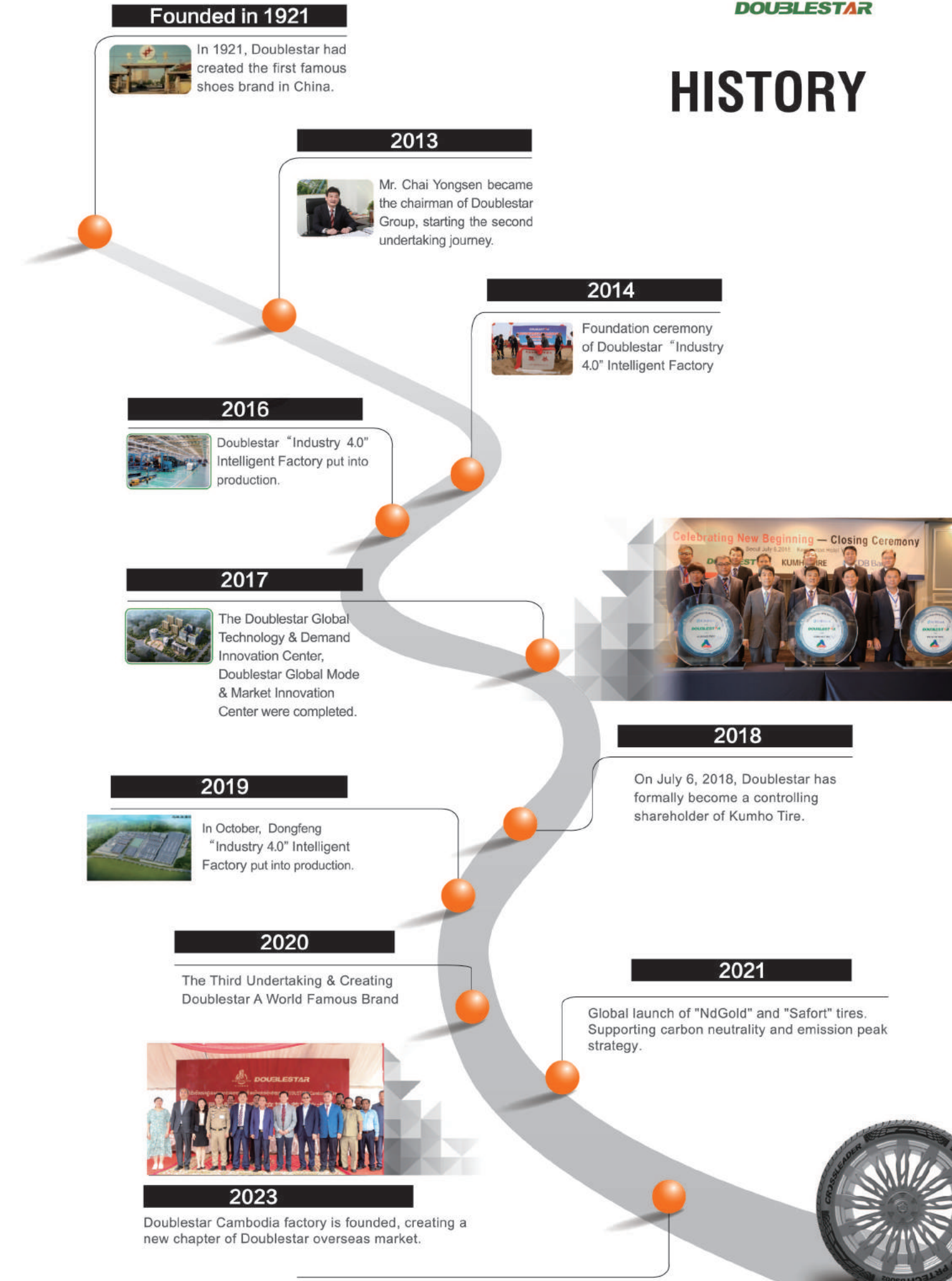
- A century rubber enterprise founded in 1921
- The Asia's 500 Most Influential Brands
- China's 500 Most Valuable Brands

Doublestar is the only state-owned listed tire enterprise with nearly a century history in Shandong Province and the chairman unit of China Rubber Industry Association Tire Branch. Nowadays, Doublestar group becomes an international group integrating three divisions of tire manufacturing, intelligent equipment (including industrial robot) and waste rubber green recycling.

As the leader of intelligent tire manufacturing in China, Doublestar is the first company with both TBR and PCR whole process "Industry 4.0" factory in tire industry. Doublestar has built 3 production bases in China (Qingdao, Shiyao, Dongying) including 6 factories. The annual production capacity is about 8 million TBR tires and 20 million PCR tires.



HISTORY



Product Quality Certificate



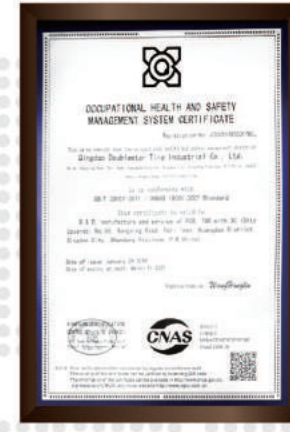
IATF 16949



ISO9001



ISO14001



ISO18001



E4-R30



E4-R54(POR)



E4-R117



GCC



DOT



SNI



INMETRO



SASO

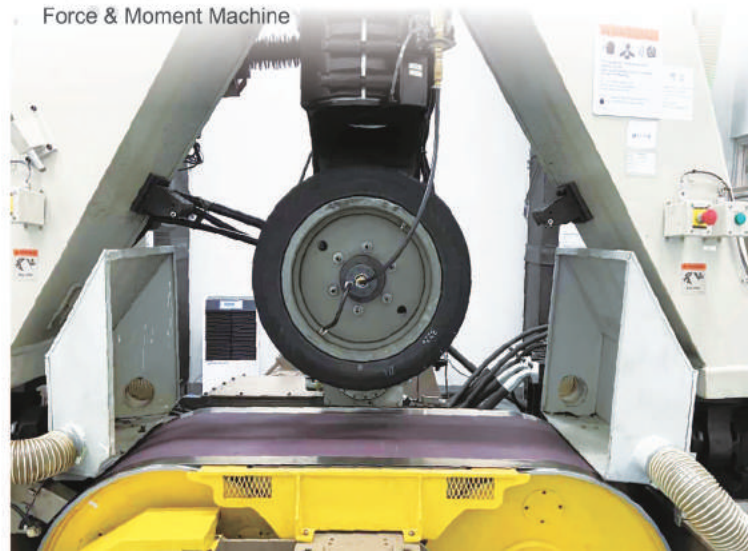


Doublestar R&D Strength

Semi-anechoic Room



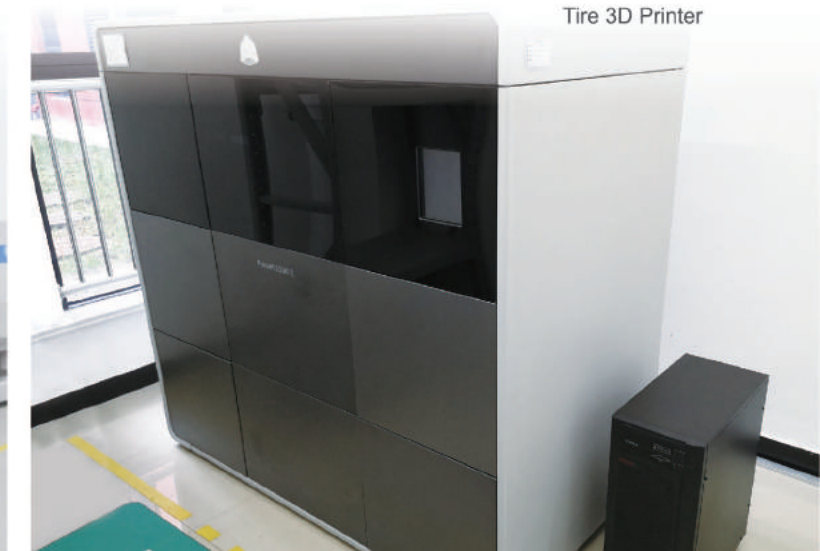
Force & Moment Machine



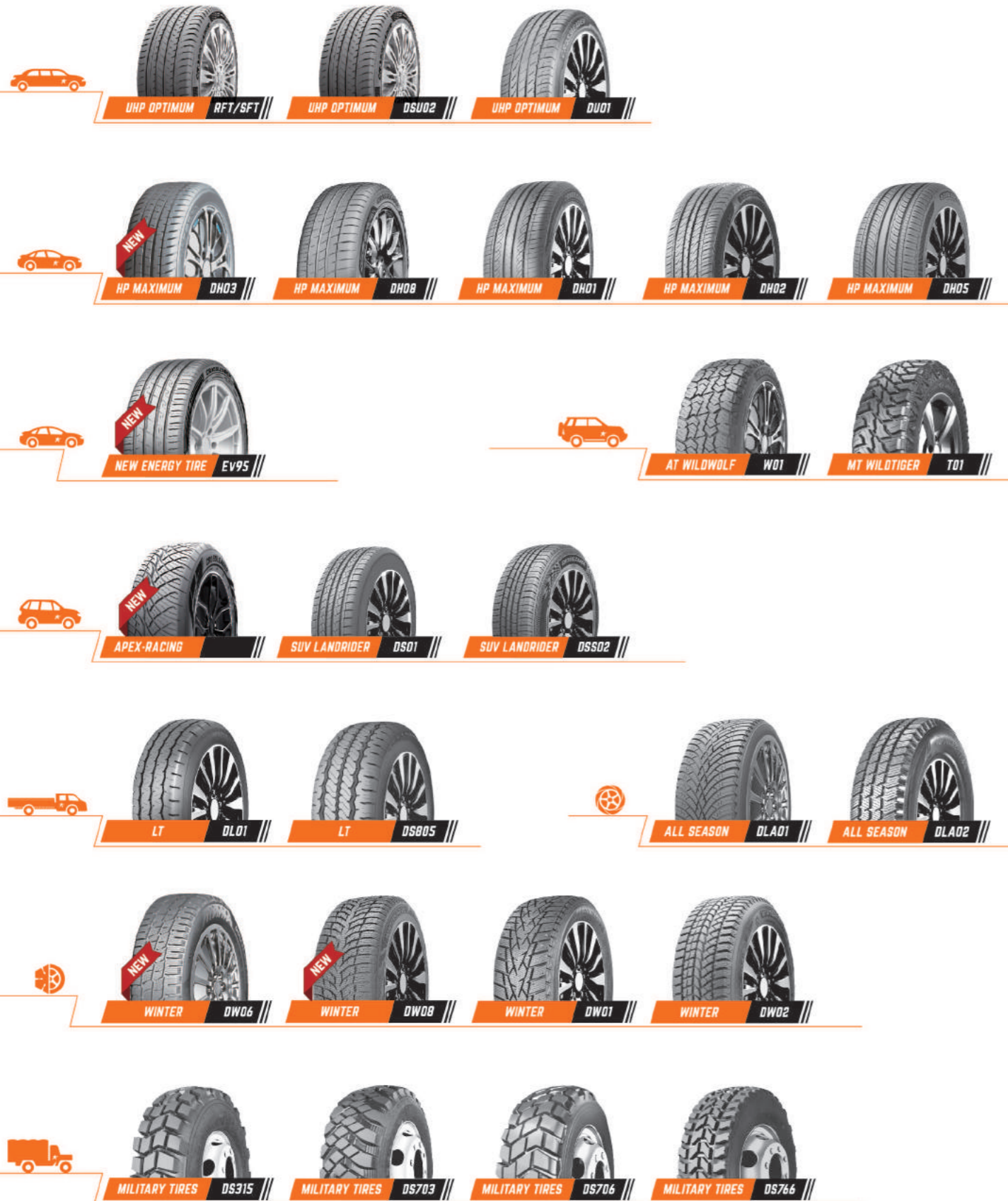
Tire Scanning Analyzer



Tire 3D Printer



PRODUCT RANGE



CONTENT

NEW ENERGY

Ev95 01

UHP OPTIMUM

RFT 06

DSU02 07

SAFORT TIRE 11

DU01 13

HP MAXIMUM

DH03 15

DH08 17

DH01 20

DH02 21

DH05 22

AT / MT

W01 25

T01 27

SUV LANDRIDER

APEX-RACING 31

DS01 32

DSS02 33

COMMERCIAL & VAN

DL01 36

DS805 37

ALL SEASON

DLA01 39

DLA02 40

WINTER TIRES

DW06 42

DW08 43

DW01 44

DW02 45

MILITARY TIRES

DS315 49

DS703 49

DS706 50

DS766 50



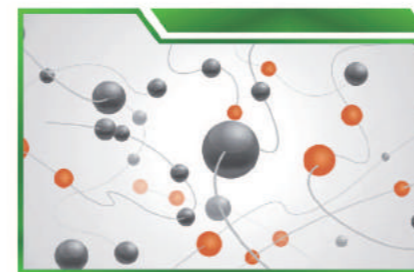


EXTREME Ev95



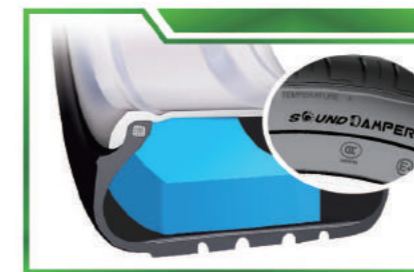
SPECIAL DESIGNED FOR NEW ENERGY VEHICLES

UHP EXTREME EV



Extremely energy efficient

The rolling resistance is reduced by 57% compared to common tires while the driving range is increased by 15%.



Extremely silent driving experience

Inside sound damper technology and multiple optimized pitch variation design can effectively reduce the tire's internal resonance, realizing a silent and comfortable journey.



Extremely safe with excellent wet grip

High density belt + high strength cap ply + high rim protection + super strong apex bead design, increase the stiffness by 16% for excellent handling and loading performance. The braking distance is shortened by 11.6% on wet ground and 8% on dry ground.

NEW ENERGY



ENERGY

DOUBLESTAR ELEGANT EV.S1 001

255/45ZR19 104 W XL C1

A **A**

70 dB **ABC**

EV95



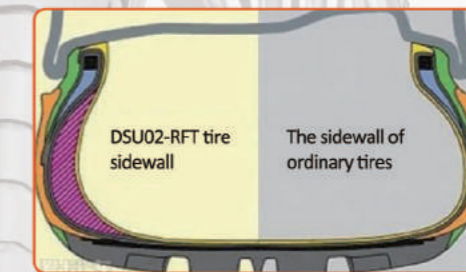
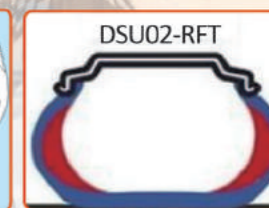
Rim	Size	LI/SS	Load Range	Section Width (mm)	Overall Diameter (mm)	Std. Rim	Inflation Pressure (Kpa)
22	265/40ZR22	106W	XL	271	771	9 1/2J	290
21	265/45ZR21	108W	XL	266	771	9J	290
20	255/50ZR20	109W	XL	265	764	8J	290
	255/45ZR20	105W	XL	255	738	8 1/2J	290
	255/40ZR20	101W	XL	260	712	9J	290
	245/45ZR20	103W	XL	243	728	8J	290
19	255/55R19	111V	XL	265	763	8J	290
	255/45ZR19	104W	XL	255	713	8 1/2J	290
	245/45ZR19	102W	XL	243	703	8J	290
	235/50ZR19	103W	XL	245	719	7 1/2J	290
	235/40ZR19	96W	XL	241	671	8 1/2J	290
18	235/45ZR18	98W	XL	236	669	8J	290
	225/60R18	100H	SL	228	727	6 1/2J	250
17	215/55ZR17	98W	XL	226	668	7J	290
	205/50ZR17	93W	XL	214	638	6 1/2J	290

UHP OPTIMUM

DSU02-RFT



- 1 Continue driving 1-2 hours after a puncture up to 80 km at a maximum speed up to 80 km/h.
- 2 No spare tire necessary.
- 3 Keep safety when the tire was punctured and the tire pressure was suddenly lost.
- 4 Reduced fuel consumption. (weight of 4 RFT tyres < 5 standard tyres)



Rim	Size	LI/SS	Load Range	Section Width (mm)	Overall Diameter (mm)	Std. Rim	Standard Pressure (Kpa)
19	RFT275/40ZR19	101Y	SL	278	703	9 1/2J	300
	RFT255/50ZR19	103W	SL	265	739	8J	300
	RFT245/45ZR19	98W	SL	243	703	8J	300
	RFT245/40ZR19	98Y	XL	248	679	8 1/2J	340
18	RFT255/55R18	105V	SL	265	737	8J	300
	RFT245/50ZR18	100W	SL	253	703	7 1/2J	300
	RFT245/45ZR18	96W	SL	243	677	8J	300
	RFT245/40ZR18	97Y	XL	248	653	8 1/2J	340
	RFT225/45ZR18	91W	SL	225	659	7 1/2J	300
17	RFT225/55ZR17	97W	SL	233	680	7J	300
	RFT225/50ZR17	94W	SL	233	658	7J	300
	RFT225/45ZR17	91W	SL	225	634	7 1/2J	300



DSU02

- 
HANDLING
- 
QUIET
- 
SAFE
- 
COMFORT
- 
WET GRIP

UHP OPTIMUM



The open shoulder groove makes the braking distance per 100km shorten to within 39m on wet ground, and the braking distance is shortened by over 3m.



Upgraded nice appearance
Pore-free sidewall design without grain point.

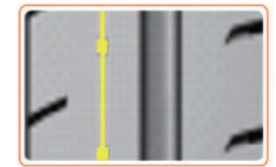
1 Super drainage performance

- Four wide longitudinal grooves can effectively ensure the drainage performance and the straight driving stability.



2 Enjoy silent driving, more comfortable

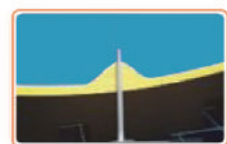
- AFB (Air Flow Breaking) design can break the natural frequency of air flow and reduce the noise about 1 dB than others.



3 Better wet grip for safer trip

- The unique design of "water absorber" increases the absorption capability of water and improves the driving stability on slippery road.

4 Safety guaranteed by using self-healing high-tech nano material. (Optional)



Rim	Size	LI/SS	Load Range	Section Width (mm)	Overall Diameter (mm)	Std. Rim	Standard Pressure (Kpa)
26	295/30ZR26	107Y	XL	301	838	10 1/2J	340
	295/35ZR24	110Y	XL	301	816	10 1/2J	340
24	295/30ZR24	104Y	XL	301	788	10 1/2J	340
	255/30ZR24	97Y	XL	260	764	9J	340
22	305/40ZR22	114Y	XL	313	803	11J	340
	285/45ZR22	114Y	XL	285	815	9 1/2J	340
	285/40ZR22	110Y	XL	290	787	10J	340
	285/35ZR22	106Y	XL	290	759	10J	340
	275/40ZR22	107Y	XL	278	779	9 1/2J	340
	265/40ZR22	106Y	XL	271	771	9 1/2J	340
	265/35ZR22	102Y	XL	271	745	9 1/2J	340
	245/30ZR22	92Y	XL	248	707	8 1/2J	340
	235/30ZR22	90Y	XL	241	701	8 1/2J	340
	21	325/30ZR21	108Y	XL	331	729	11 1/2J
295/40ZR21		111Y	XL	301	769	10 1/2J	340
295/35ZR21		107Y	XL	301	739	10 1/2J	340
285/40ZR21		109Y	XL	290	761	10J	340
285/35ZR21		105Y	XL	290	733	10J	340
285/30ZR21		100Y	XL	290	705	10J	340
275/45ZR21		110W	XL	273	781	9J	340
275/40ZR21		107Y	XL	278	753	9 1/2J	340
265/45ZR21		104Y	SL	266	771	9J	300
265/40ZR21		105Y	XL	271	745	9 1/2J	340
245/35ZR21		96Y	XL	248	705	8 1/2J	340
20	315/35ZR20	110Y	XL	320	728	11J	340
	295/45ZR20	114Y	XL	296	774	10J	340
	295/40ZR20	110Y	XL	301	744	10 1/2J	340
	285/50ZR20	116W	XL	297	794	9J	340
	285/35ZR20	104Y	XL	290	708	10J	340
	285/30ZR20	99Y	XL	290	680	10J	340
	275/55ZR20	117W	XL	284	810	8 1/2J	340
	275/45ZR20	110W	SL	273	756	9J	300
	275/40ZR20	106Y	XL	278	728	9 1/2J	340
	275/35ZR20	102Y	XL	278	700	9 1/2J	340
	275/30ZR20	97Y	XL	278	674	9 1/2J	340
	265/50ZR20	111W	XL	277	774	8 1/2J	340
	265/45ZR20	108W	XL	266	746	9J	340
	265/35ZR20	99Y	XL	271	694	9 1/2J	340
	255/50ZR20	109W	XL	265	764	8J	340
	255/45ZR20	105W	XL	255	738	8 1/2J	340
	255/40ZR20	101Y	XL	260	712	9J	340
	255/35ZR20	97Y	XL	260	686	9J	340
	245/50ZR20	105W	XL	253	754	7 1/2J	340
	245/45ZR20	103W	XL	243	728	8J	340
	245/40ZR20	99Y	XL	248	704	8 1/2J	340
245/35ZR20	95Y	XL	248	680	8 1/2J	340	
245/30ZR20	90Y	XL	248	656	8 1/2J	340	
235/35ZR20	92Y	XL	241	672	8 1/2J	340	
235/30ZR20	88Y	XL	241	650	8 1/2J	340	
225/35ZR20	90Y	XL	230	666	8J	340	
225/30ZR20	85Y	XL	230	644	8J	340	
19	285/45ZR19	111Y	XL	285	739	9 1/2J	340
	285/40ZR19	107Y	XL	290	711	10J	340
	285/35ZR19	103Y	XL	290	683	10J	340
	275/55ZR19	111W	SL	284	785	8 1/2J	300
	275/45ZR19	108W	XL	273	731	9J	340
	275/40ZR19	105Y	XL	278	703	9 1/2J	340
	275/35ZR19	100Y	XL	278	675	9 1/2J	340
	265/50ZR19	110W	XL	277	749	8 1/2J	340
	265/35ZR19	98Y	XL	271	669	9 1/2J	340
	265/30ZR19	93Y	XL	271	643	9 1/2J	340
	255/55ZR19	111W	XL	265	763	8J	340
	255/50ZR19	107W	XL	265	739	8J	340
	255/45ZR19	104W	XL	255	713	8 1/2J	340
	255/40ZR19	100Y	XL	260	687	9J	340
	255/35ZR19	96Y	XL	260	661	9J	340
	255/30ZR19	91Y	XL	260	637	9J	340

Rim	Size	LI/SS	Load Range	Section Width (mm)	Overall Diameter (mm)	Std. Rim	Standard Pressure (Kpa)	
19	245/55R19	103V	SL	253	753	7 1/2J	300	
	245/45ZR19	102W	XL	243	703	8J	340	
	245/40ZR19	98Y	XL	248	679	8 1/2J	340	
	245/35ZR19	93Y	XL	248	655	8 1/2J	340	
	235/55R19	105V	XL	245	741	7 1/2J	340	
	235/50ZR19	103W	XL	245	719	7 1/2J	340	
	235/45R19	99Y	XL	236	695	8J	340	
	235/40ZR19	96Y	XL	241	671	8 1/2J	340	
	235/35ZR19	91Y	XL	241	647	8 1/2J	340	
	225/45ZR19	96W	XL	225	685	7 1/2J	340	
	225/40ZR19	93Y	XL	230	663	8J	340	
	225/35ZR19	88Y	XL	230	641	8J	340	
	215/35ZR19	85W	XL	218	633	7 1/2J	340	
	18	275/40ZR18	103Y	XL	278	677	9 1/2J	340
		265/40ZR18	101Y	XL	271	669	9 1/2J	340
		265/35ZR18	97Y	XL	271	643	9 1/2J	340
255/55R18		105V	SL	265	737	8J	300	
255/45ZR18		103W	XL	255	687	8 1/2J	340	
255/40ZR18		99Y	XL	260	661	9J	340	
255/35ZR18		94Y	XL	260	635	9J	340	
245/45ZR18		100W	XL	243	677	8J	340	
245/40ZR18		97Y	XL	248	653	8 1/2J	340	
235/55ZR18		104W	XL	245	715	7 1/2J	340	
235/50ZR18		101W	XL	245	693	7 1/2J	340	
235/45ZR18		98W	XL	236	669	8J	340	
235/40ZR18		95Y	XL	241	645	8 1/2J	340	
225/55ZR18		102W	XL	233	705	7J	340	
225/50ZR18		99W	XL	233	683	7J	340	
225/45ZR18		95W	XL	225	659	7 1/2J	340	
225/40ZR18	92Y	XL	230	637	8J	340		
215/45ZR18	93W	XL	213	651	7J	340		
215/40ZR18	89W	XL	218	629	7 1/2J	340		
215/35ZR18	84Y	XL	218	607	7 1/2J	340		
17	245/45ZR17	99W	XL	243	652	8J	340	
	245/40ZR17	95Y	XL	248	628	8 1/2J	340	
	235/55ZR17	103W	XL	245	690	7 1/2J	340	
	235/50ZR17	100W	XL	245	668	7 1/2J	340	
	235/45ZR17	97W	XL	236	644	8J	340	
	225/55R17	97V	SL	233	680	7J	300	
	225/50R17	94V	SL	233	658	7J	300	
	225/45ZR17	94W	XL	225	634	7 1/2J	340	
	215/55R17	94V	SL	226	668	7J	300	
	215/50ZR17	95W	XL	226	648	7J	340	
	215/45ZR17	91W	XL	213	626	7J	340	
	215/40ZR17	87Y	XL	218	604	7 1/2J	340	
	205/55ZR17	95W	XL	214	658	6 1/2J	340	
	205/50R17	89V	SL	214	638	6 1/2J	300	
205/45ZR17	88W	XL	206	616	7J	340		
205/40ZR17	84W	XL	212	596	7 1/2J	340		
16	225/55ZR16	99W	XL	233	654	7J	340	
	225/50ZR16	96W	XL	233	632	7J	340	
	215/55R16	97V	XL	226	642	7J	340	
	205/55ZR16	91V	SL	214	632	6 1/2J	300	
205/45ZR16	87W	XL	206	590	7J	340		

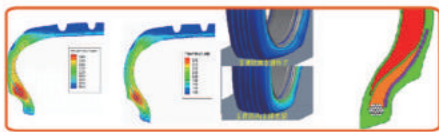
"SAFORT" TIRE

Safe Your Drive Love Your Life

"DSU02-SFT" adopts "SAFORT" magic support technology + unique AFB (air flow Breaking) pattern mute technology + special formula technology.

1 When the pressure is reduced to 0 KPA, under a normal usage condition, the vehicle can drive for a period between 30 minutes to 60 minutes at a speed of 60km/h.

2 "SAFORT" magic support structure and formula design



3 AFB (Air Flow Breaking) pattern quiet technology

4 Keep safety when the tire was punctured and the tire pressure was suddenly lost.



5 Compatible with conventional rims

DSU02-SFT

Rim	Size	LI/SS	Load Range	Section Width (mm)	Overall Diameter (mm)	Std. Rim	Standard Pressure (Kpa)
21	265/45ZR21	104W	SL	266	771	9J	300
	255/50ZR20	109W	XL	265	764	8J	340
20	255/45ZR20	101W	SL	255	738	8 1/2J	300
	245/45ZR20	99W	SL	243	728	8J	300
19	255/55R19	107V	SL	265	763	8J	300
	255/50ZR19	103W	SL	265	739	8J	300
	245/55R19	103V	SL	253	753	7 1/2J	300
	235/55R19	101V	SL	245	741	7 1/2J	300
	235/50ZR19	99W	SL	245	719	7 1/2J	300
18	245/45ZR18	96W	SL	243	677	8J	300
	245/40ZR18	93Y	SL	248	653	8 1/2J	300
	235/55R18	100V	SL	245	715	7 1/2J	300
	235/50R18	97W	SL	245	693	7 1/2J	300
	235/45ZR18	94W	SL	236	669	8J	300
	225/55R18	98V	SL	233	705	7J	300
	225/50ZR18	95W	SL	233	683	7J	300
	225/45ZR18	91W	SL	225	659	7 1/2J	300
17	235/55R17	99V	SL	245	690	7 1/2J	300
	235/45ZR17	94W	SL	236	644	8J	300
	225/55R17	97V	SL	233	680	7J	300
	225/50R17	94V	SL	233	658	7J	300
	225/45ZR17	91W	SL	225	634	7 1/2J	300
	215/50R17	91W	SL	226	648	7J	300
	215/50ZR17	91W	SL	226	648	7J	300
	215/45ZR17	87W	SL	213	626	7J	300
	205/55R17	91V	SL	214	658	6 1/2J	300
16	205/50R17	89V	SL	214	638	6 1/2J	300
	215/55R16	93V	SL	226	642	7J	300
	205/55R16	91V	SL	214	632	6 1/2J	300

DU01



UHP OPTIMUM



Four longitudinal grooves are engineered to greatly improve the drainage and grip on wet condition, meanwhile, helping deliver impressive handling performance.



Application of contacting print technology helps ensure the handling stability when cornering.

The inner and outer sides of the contact area are designed with the proportion of 45:55 to help balance the safety in wet condition and the cornering stability.



Wider shoulder pattern design to guarantee the stability of longhaul driving or cornering.

Rim	Size	LI/SS	Load Range	Section Width (mm)	Overall Diameter (mm)	Std. Rim	Standard Pressure (Kpa)
18	245/50R18	100V	SL	253	703	7 1/2J	300
16	195/60R16	89V	SL	201	640	6J	300



HP MAXIMUM

NEW

DH03



HP MAXIMUM



1 Excellent Grip Performance

- Asymmetrical pattern design ensures the grip of the tire when turning and improves the handling performance.

- Optimizing the tread width of the driving surface and the high proportion of the upper and lower cambered surface improves the wet grip performance.



2 Low Noise and More Comfortable

- Dual pitch design with optimal pitch order can effectively reduce the noise peak.



3 Optimised rolling resistance for reduced fuel consumption

- This is a tire suitable for long-distance driving, and also suitable for people who pay attention to fuel consumption. Its advantage lies in reducing the rolling resistance of the tires while ensuring a high degree of safety during braking.

- The staggered steel sheet on tread center and semi-enclosed shoulder design reduce the tire noise.

Rim	Size	LI/SS	Load Range	Section Width (mm)	Overall Diameter (mm)	Std. Rim	Standard Pressure (Kpa)
18	245/45ZR18	100W	XL	243	677	8J	340
	245/40ZR18	97W	XL	248	653	8 1/2J	340
	235/45ZR18	98W	XL	236	669	8J	340
	235/40ZR18	95W	XL	241	645	8 1/2J	340
	225/45ZR18	95W	XL	225	659	7 1/2J	340
	225/40ZR18	92W	XL	230	637	8J	340
17	225/50ZR17	98W	XL	233	658	7J	340
	225/45ZR17	94W	XL	225	634	7 1/2J	340
	215/55ZR17	98W	XL	226	668	7J	340
	215/50ZR17	95W	XL	226	648	7J	340
	205/50ZR17	93W	XL	214	638	6 1/2J	340
	205/45ZR17	88W	XL	206	616	7J	340
16	215/65R16	98H	SL	221	686	6 1/2J	300
	215/60R16	99V	XL	221	664	6 1/2J	340
	215/55ZR16	97W	XL	226	642	7J	340
	205/60R16	92V	SL	209	652	6J	300
	205/55R16	94V	XL	214	632	6 1/2J	340
	195/55R16	91V	XL	201	620	6J	340
15	205/70R15	96H	SL	209	669	6J	300
	205/65R15	94V	SL	209	647	6J	300
	205/60R15	91V	SL	209	627	6J	300
	195/65R15	91V	SL	201	635	6J	300
	195/60R15	88H	SL	201	615	6J	300
	195/55R15	85V	SL	201	595	6J	300
	195/50R15	82V	SL	201	577	6J	300
	185/65R15	88H	SL	189	621	5 1/2J	300
	185/60R15	88H	XL	189	603	5 1/2J	340
	185/55R15	82V	SL	194	585	6J	300
14	175/65R15	84H	SL	177	609	5J	300
	165/50R15	72T	SL	170	547	5J	300
	205/70R14	95H	SL	209	644	6J	300
	195/70R14	91H	SL	201	630	6J	300
	185/70R14	88H	SL	189	616	5 1/2J	300
	185/65R14	86H	SL	189	596	5 1/2J	300
	185/60R14	82H	SL	189	578	5 1/2J	300
	175/75R14	86T	SL	176	615	5J	300
	175/70R14	84H	SL	177	602	5J	300
	175/65R14	82H	SL	177	584	5J	300
13	165/70R14	81H	SL	170	588	5J	300
	165/65R14	83T	XL	170	570	5J	340
	165/60R14	75H	SL	170	554	5J	300
	165/55R14	72T	SL	170	538	5J	300
	155/65R14	75H	SL	157	558	4 1/2J	300
	185/70R13	86T	SL	189	590	5.00B	300
	175/75R13	85T	SL	176	589	5.00B	300
	175/70R13	82H	SL	177	576	5.00B	300
	175/60R13	77T	SL	177	540	5.00B	300
	165/70R13	79T	SL	170	562	5.00B	300
13	165/65R13	77T	SL	170	544	5.00B	300
	165/60R13	73T	SL	170	528	5.00B	300
	155/70R13	75T	SL	157	548	4.50B	300
	155/65R13	73T	SL	157	532	4.50B	300

DH08

- HANDLING
- QUIET
- SAFE
- COMFORT
- WET GRIP

HP MAXIMUM



DESIGNED FOR
"HIGH SPEED DRIVING STABILITY",
SPECIALLY ON RAINY ROAD

1 Better wet & dry handling

Should & center block ratio can improve handling performance to prevent abnormal wear.



2 Excellent wet grip performance

Inside & outside semi-open shoulder groove strengthens wet grip performance of tire.



Enjoy silent driving, more comfortable
Five pitch design improves dry and wet performance; making blocks grounded smoother and improving driving comfort and reduce the noise.



Adopting the European favorite design language "simple" & "natural".

HP Summer Tire – EU Labeling

205/55 R16 91V

ENERGY

DOUBLESTAR MAXIMUM DH08 025

205/55R16 91 V C1

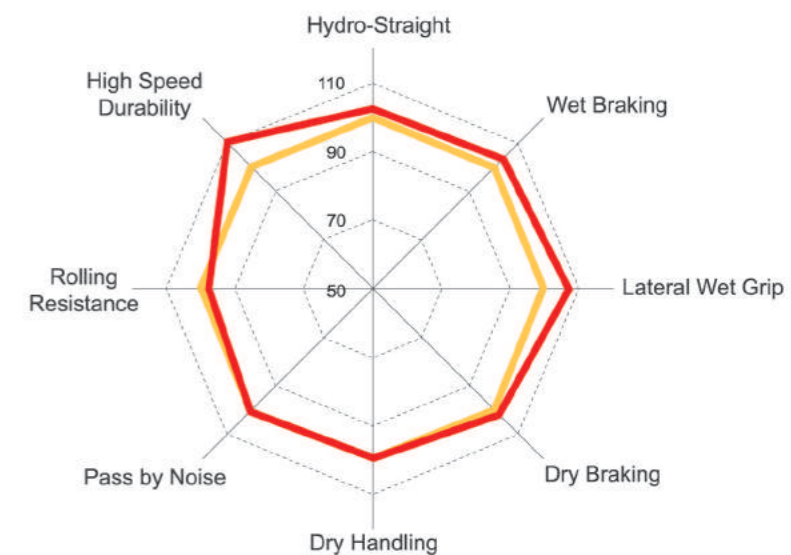
Energy consumption: A

Wet grip: A

Noise: 68 dB A

PERFORMANCE TEST RESULTS

— Average of BM (Tier One Brands) — DH08





DH01

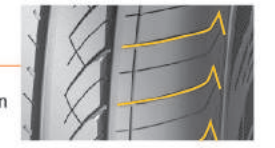
- 
HANDLING
- 
QUIET
- 
SAFE
- 
COMFORT

HP MAXIMUM


Rim	Size	LI/SS	Load Range	Section Width (mm)	Overall Diameter (mm)	Std. Rim	Standard Pressure (Kpa)
17	225/45ZR17	94W	SL	225	686	7 1/2J	300
	215/65R16	98H	SL	221	686	6 1/2J	300
	215/60R16	95V	SL	221	664	6 1/2J	300
16	205/60R16	92H	SL	209	652	6 1/2J	300
	205/55R16	91V	SL	214	632	6 1/2J	300
	195/60R16	87V	SL	201	620	6J	300
15	205/70R15	96T	SL	209	669	6J	300
	205/65R15	94H	SL	209	647	6J	300
	195/65R15	91H	SL	201	635	6J	300
	195/60R15	88V	SL	201	615	6J	300
	195/55R15	85V	SL	201	595	6J	300
	195/50R15	82V	SL	201	577	6J	300
	185/65R15	88H	SL	189	621	5 1/2J	300
	185/60R15	84H	SL	189	603	5 1/2J	300
14	195/70R14	91T	SL	201	630	6J	300
	185/65R14	86H	SL	189	596	5 1/2J	300
	185/60R14	82H	SL	189	578	5 1/2J	300
	175/70R14	84T	SL	177	602	5J	300
	175/65R14	82H	SL	177	584	5J	300
	165/70R14	81T	SL	170	588	5J	300
	165/65R14	79T	SL	170	570	5J	300
	155/65R14	75T	SL	157	558	4 1/2J	300

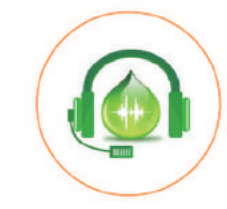


Streamline small groove design, low noise, quiet and comfortable.

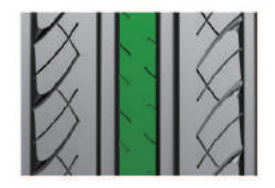


Narrow distance between patterns is designed to deliver even wear and extend tire life.

Both of tread and sidewall with appropriate hardness and softness have passed strict test, which can effectively avoid the vibration and noise of tire.



Combination of center rib and kerf helps change the tread rigidity and improve ride comfort.

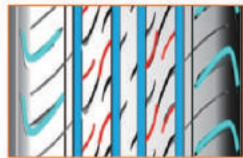


Rim	Size	LI/SS	Load Range	Section Width (mm)	Overall Diameter (mm)	Std. Rim	Standard Pressure (Kpa)
17	215/55ZR17	98W	XL	226	668	7J	340
	215/50ZR17	95W	XL	226	648	7J	340
16	225/60R16	98H	SL	228	676	6 1/2J	300
	215/55ZR16	97W	XL	226	642	7J	340
15	215/65R15	96V	SL	221	661	6 1/2J	300

DH02



HP MAXIMUM



Tiny blocks with high density are designed to reduce noise due to tire vibration and help provide more comfortable and quiet ride experience.



Lightweight profile design and application of new reinforced materials can decrease tire weight by 8%, which also help save fuel and protect environment.



Combination of center rib and kerf helps change the tread rigidity and improve ride comfort.

The tread is engineered with low rolling resistance formula, which also helps reduce fuel consumption and provide safe ride.



Rim	Size	LI/SS	Load Range	Section Width (mm)	Overall Diameter (mm)	Std. Rim	Standard Pressure (Kpa)
18	225/40ZR18	92W	XL	230	637	8J	340
	225/45ZR17	94W	XL	225	634	7 1/2J	340
16	215/60R16	95H	SL	221	664	6 1/2J	300
	205/55R16	94V	XL	214	632	6 1/2J	340
15	205/65R15	94H	SL	209	647	6J	300
	195/65R15	91V	SL	201	635	6J	300
	195/60R15	88H	SL	201	615	6J	300
	185/65R15	88H	SL	189	621	5 1/2J	300
	205/70R14	98T	XL	209	644	6J	340
14	195/70R14	91T	SL	201	630	6J	300
	185/70R14	88T	SL	189	616	5 1/2J	300
	185/65R14	86T	SL	189	596	5 1/2J	300
	185/60R14	82T	SL	189	578	5 1/2J	300
	175/65R14	82T	SL	177	584	5J	300
	185/70R13	86T	SL	189	590	5 1/2J	300
13	175/70R13	82T	SL	177	576	5J	300
	165/70R13	79T	SL	170	562	5J	300
	165/65R13	77T	SL	170	544	5J	300
	155/70R13	75T	SL	157	548	4 1/2B	300
	155/65R13	73H	SL	157	532	4 1/2B	300



DH05



HP MAXIMUM



Knife-shaped groove pattern cuts off the water film and air flow; anti-wet and low noise.

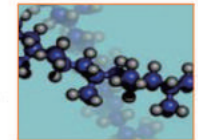


Optimized carcass outline design for driving quiet comfort.



The rolling resistance is 8% lower than common tires, saving about \$15 per year.

Formula with silicon ensures environment friendly requirement and avoids hydroplaning.



Rim	Size	LI/SS	Load Range	Section Width (mm)	Overall Diameter (mm)	Std. Rim	Standard Pressure (Kpa)
16	215/60R16	99H	XL	221	664	6 1/2J	340
	205/55R16	91V	SL	214	632	6 1/2J	300
	205/60R16	92H	SL	209	652	6J	300
	195/55R16	87V	SL	206	620	6J	300
	205/70R15	96T	SL	209	669	6J	300
15	205/60R15	95H	XL	209	627	6J	340
	205/65R15	94H	SL	209	647	6J	300
	195/55R15	85H	SL	201	595	6J	300
	195/65R15	91V	SL	201	635	6J	300
	195/60R15	88H	SL	201	615	6J	300
	195/50R15	86H	XL	201	577	6J	340
	185/60R15	88H	XL	189	603	5 1/2J	340
	185/65R15	88H	SL	189	621	5 1/2J	300
	185/55R15	82H	SL	194	585	6J	300
	175/65R15	88H	XL	177	609	5J	340
14	205/70R14	95T	SL	209	644	6J	300
	195/60R14	86H	SL	201	590	6J	300
	185/60R14	82H	SL	189	578	5 1/2J	300
	185/65R14	86H	SL	189	596	5 1/2J	300
	185/70R14	88T	SL	189	616	5 1/2J	300
	175/65R14	82H	SL	177	584	5J	300
	175/70R14	84T	SL	177	602	5J	300
	165/60R14	79T	XL	170	554	5J	340
	165/65R14	79T	SL	170	570	5J	300
	165/70R14	81T	SL	170	588	5J	300
13	155/65R14	75T	SL	157	558	4 1/2J	300
	185/70R13	86T	SL	189	590	5 1/2B	300
	175/70R13	82T	SL	177	576	5B	300
	175/60R13	77T	SL	177	540	5B	300
	165/70R13	79T	SL	170	562	5B	300
	165/65R13	77T	SL	170	544	4 1/2B	300
	155/70R13	75T	SL	157	548	4 1/2B	300



AT/MT

W01



AT WILDWOLF



1 Extra long service life

The layered design in the block edge and the self-cleaning groove design can prevent stone and reduce the damage to the tire.



2 Superior grip capability

- Wider shoulder pattern design guarantees the stability and safety when sharp turning and braking.
- The bionic wolf claw pattern is designed to improve the grip by 15%.



Anti-scratch, much safer
The shield simulation sidewall design can effectively reduce the damage probability by 80% when hitting the curb or other sharp objects.



Safety guaranteed by using self-healing high-tech nano material.(Optional)



Rim	Size	LI/SS	Load Range	Section Width (mm)	Overall Diameter (mm)	Tread Depth (mm)	Std. Rim	Standard Pressure (Kpa)
18	265/60R18	110T	SL	272	775	11.5	8J	300
	235/60R18	103Q	SL	240	739	11.5	7J	300
	235/55R18	100Q	SL	245	715	11.5	7 1/2J	300
	235/50R18	97Q	SL	245	693	11.5	7 1/2J	300
	215/55R18	95Q	SL	226	693	11.5	7J	300
17	285/65R17	116T	SL	291	795	11.5	8 1/2J	300
	265/65R17LT	120/117Q	10PR/E	272	776	12.0	8J	550
	235/65R17	104Q	SL	240	738	11.5	7J	300
	225/65R17	102Q	SL	228	724	11.5	6 1/2J	300
	225/60R17	99Q	SL	228	702	11.5	6 1/2J	300
16	215/60R17	96Q	SL	221	690	11.5	6 1/2J	300
	265/70R16LT	110/107Q	6PR/C	272	778	12.0	8J	350
	255/70R16LT	108/104Q	6PR/C	260	764	12.0	7 1/2J	350
	245/75R16LT	114/111Q	8PR/D	248	774	11.5	7J	450
	245/70R16LT	113/110Q	8PR/D	248	750	11.5	7J	450
	225/75R16LT	103/100Q	6PR/C	223	744	11.5	6J	350
15	205/55R16	94T	XL	214	632	9.0	6 1/2J	340
	31*10.5R15LT	109Q	6PR/C	268	775	12.0	8 1/2J	350
	255/70R15C	112/110Q	/	260	739	12.0	7 1/2J	375
	235/75R15LT	110/107Q	8PR/D	235	733	11.5	6 1/2J	450
	215/75R15LT	100/97R	6PR/C	216	703	11.5	6J	350
14	195/65R15	95T	XL	201	635	9.0	6J	340
	195/60R15	92T	XL	201	615	9.0	6J	340
	215/75R14LT	98/95Q	6PR/C	216	678	11.5	6J	350

T01



MT WILDTIGER



1 Anti-scratch, much safer

- Shield sidewall design with 6-7mm thicker than the ordinary tire, the tire damage probability is reduced by 80%.



2 Self-cleaning

- The up-and-down groove can throw out the mud easily and has better braking ability.



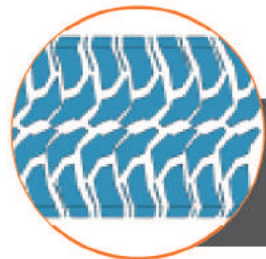
3 Superior grip capability

- The bionic tiger claw pattern provides strong grip on the mountain filed, desert, mud and other bad road conditions.

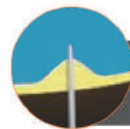


4 Extra long service life

- The bump design in the shoulder groove can prevent stone and reduce the damage to the tire.



Scientifically optimized pattern design
FEA(finite element analysis technology) is adopted to optimize the tread profile, pattern imprint and ground contact area and improve the grip.



Safety guaranteed by using self-healing high-tech nano material.(Optional)



Rim	Size	LI/SS	Load Range	Section Width (mm)	Overall Diameter (mm)	Tread Depth (mm)	Std. Rim	Standard Pressure (Kpa)
26	37*13.50R26LT	117Q	8PR/D	345	928	15.5	11J	450
	37*13.50R22LT	123Q	10PR/E	345	928	15.5	11J	450
22	35*12.50R22LT	117Q	10PR/E	318	877	15.5	10J	450
	33*12.50R22LT	109Q	10PR/E	318	826	15.5	10J	450
20	37*13.50R20LT	127Q	10PR/E	318	928	15.5	10J	450
	35*12.50R20LT	121Q	10PR/E	318	877	15.5	10J	450
	33*12.50R20LT	114Q	10PR/E	318	826	15.5	10J	450
18	35*12.50R18LT	123Q	10PR/E	318	877	15.5	10J	450
	33*12.50R18LT	118Q	10PR/E	318	826	15.5	10J	450
	235/60R18	103N	SL	240	739	15.5	7J	300
17	37*13.50R17LT	121Q/131Q	8PR/D&10PR/E	345	928	15.5	11J	350
	35*12.50R17LT	121Q	10PR	318	877	15.5	10J	350
	33*12.50R17LT	120Q	10PR/E	318	826	15.5	10J	450
	265/70R17LT	118/115N	8PR/D	272	804	15.5	8J	450
	265/65R17LT	120/117N	10PR/E	272	776	15.5	8J	550
	245/70R17LT	114/110N	8PR/D	248	776	15.5	7J	450
16	285/75R16LT	122/119N	8PR/D	286	834	15.5	8J	450
	265/75R16LT	119/116N	8PR/D	267	804	15.5	7 1/2J	450
	265/70R16LT	117/114N	8PR/D	272	778	15.5	8J	450
	245/75R16LT	114/111N	8PR/D	248	774	15.5	7J	450
15	225/75R16LT	110/107N	8PR/D	223	744	15.5	6J	450
	35*12.50R15LT	113Q	6PR/C	318	877	15.5	10J	350
	33*12.50R15LT	108N	6PR/C	318	826	15.5	10J	350
	31*10.50R15LT	109N	6PR/C	268	775	15.5	8 1/2J	350
	30*9.50R15LT	104N	6PR/C	240	750	15.5	7 1/2J	350
15	235/75R15LT	110/107N	8PR/D	235	733	15.5	6 1/2J	450
	215/75R15LT	106/103N	8PR/D	216	703	15.5	6J	450

A white SUV is shown from a rear-quarter perspective, driving on a multi-lane highway. The road is flanked by metal guardrails. In the background, there are rolling green mountains under a bright blue sky with scattered white clouds. The sun is high, creating a lens flare effect. A dark blue rectangular box is overlaid on the right side of the image, containing the text 'SUV LANDRIDER' in white, bold, sans-serif font.

SUV LANDRIDER

NEW
APEX *Racing*



Better grip and drainage performance 1

Asymmetric pattern design meets the different requirements on the inside and outside of the tread. The outside pattern provides strong grip ability while the inside improves the drainage performance.



Excellent wet traction 2

Wide longitudinal groove with more lateral branches improve the driving traction, especially on wetland.

Better steer stability 3

Large pattern block on the outside tread ensures the stability and balance control when cornering.



Rim	Size	LI/SS	Load Range	Section Width (mm)	Overall Diameter (mm)	Std. Rim	Standard Pressure (Kpa)
18	275/40ZR18	103Y	XL	278	677	9 1/2J	340
	265/60R18	110H	SL	272	775	8J	300
	255/50R18	106H	XL	265	713	8J	340
	245/45ZR18	100W	XL	243	677	8J	340



DS01



SUV LANDRIDER



Bonic leopard claw pattern design improves the handling safety by 10%.



Four wide longitudinal grooves and oblique lateral grooves provide better drainage ability, which improves the wet grip by 13%.



Semi-closed shoulder design ensures cornering stability and low-noise experience.

Rim	Size	LI/SS	Load Range	Section Width (mm)	Overall Diameter (mm)	Std. Rim	Standard Pressure (Kpa)
20	285/50R20	112H	SL	297	794	9J	300
	275/55R20	113V	SL	284	810	8 1/2J	300
	265/50R20	111V	XL	277	774	8 1/2J	340
	255/55R20	110V	XL	265	788	8J	340
	255/50R20	109H	XL	265	764	8J	340
19	255/50R19	103V	SL	265	739	8J	300
	245/55R19	103V	SL	253	753	7 1/2J	300
	245/45R19	98H	SL	243	703	8J	300
	235/50R19	103V	XL	245	719	7 1/2J	340
	265/60R18	110H	SL	272	775	8J	300
18	255/55R18	105V	SL	265	737	8J	300
	235/65R18	110H	XL	240	763	7J	340
	235/60R18	107H	XL	240	739	7J	340
	235/55R18	100V	SL	245	715	7 1/2J	300
	235/50R18	97V	SL	245	693	7 1/2J	300
	225/60R18	100T	SL	228	727	6 1/2J	300
	225/55R18	98V	SL	233	705	7J	300
	215/55R18	95H	SL	226	693	7J	300
	275/65R17	115T	SL	279	790	8J	300
	265/70R17	115H	SL	272	804	8J	300
17	265/65R17	112T	SL	272	776	8J	300
	245/65R17	107T	SL	248	750	7J	300
	235/65R17	104T	SL	240	738	7J	300
	235/60R17	102H	SL	240	714	7J	300
	235/55R17	103V	XL	245	690	7 1/2J	340
	225/65R17	102T	SL	228	724	6 1/2J	300
	225/60R17	99H	SL	228	702	6 1/2J	300
	225/55R17	101H	XL	233	680	7J	340
	215/60R17	100H	XL	221	690	6 1/2J	340
	215/55R17	94V	SL	226	668	7J	300
	215/50R17	95V	XL	226	648	7J	340
	16	275/70R16	114S	SL	279	792	8J
265/70R16		112H	SL	272	778	8J	300
245/75R16		111S	SL	248	774	7J	300
245/70R16		107T	SL	248	750	7J	300
235/70R16		106T	SL	240	736	7J	300
235/60R16		100H	SL	240	688	7J	300
225/70R16		103T	SL	228	722	6 1/2J	300
215/70R16LT		108/106R	8PR/D	221	708	6 1/2J	450
215/70R16LT		100/97R	6PR/C	221	708	6 1/2J	350
215/70R16		100T	SL	221	708	6 1/2J	300
215/65R16		102H	XL	221	686	6 1/2J	340
205/65R16		99H	XL	209	672	6J	340
205/60R16		96V	XL	209	652	6J	340
205/55R16		94H	XL	214	632	6 1/2J	340
205/55R16		94V	XL	214	632	6 1/2J	340
15	235/75R15	105H	SL	235	733	6 1/2J	300
	225/75R15	102T	XL	223	719	6J	340
	215/75R15	100T	SL	216	703	6J	300

DSS02



SUV LANDRIDER



Excellent handling performance 1

- Central rib pattern block ensures the stability when running straightly on the highway.

Excellent braking performance 2

- Herringbone shape steel sheet and stiffeners design greatly improve the rigidity of the tread, and the braking performance is improved by 5%.

Economic and durable 3

- Adopting Lanxess neodymium-based rubber, the rolling resistance decreased by more than 10% and the endurance quality is improved by 5%.



4 Enjoy silent driving, more comfortable

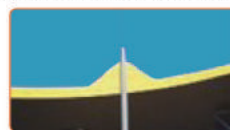
- Variable pitch pattern design prevents the resonance between the pattern blocks; and the noise is reduced by 15%.

5 Upgraded nice appearance

- Pore-free sidewall design without grain point.



6 Safety guaranteed by using self-healing high-tech nano material.(Optional)



Rim	Size	LI/SS	Load Range	Section Width (mm)	Overall Diameter (mm)	Std. Rim	Standard Pressure (Kpa)
21	275/45ZR21	110W	XL	273	781	9J	340
	265/40ZR21	105W	XL	271	745	9 1/2J	340
20	275/40ZR20	106W	XL	278	728	9 1/2J	340
	255/50R20	105H	SL	265	764	8J	300
	245/50R20	102V	SL	253	754	7 1/2J	300
	245/45R20	103V	XL	243	728	8J	340
19	235/55R20	105V	XL	245	766	7 1/2J	340
	255/55R19	111V	XL	265	764	8J	340
	255/50R19	103V	SL	265	739	8J	300
	245/55R19	103V	SL	253	753	7 1/2J	300
	235/55R19	105V	XL	245	741	7 1/2J	340
	235/50R19	103V	XL	245	719	7 1/2J	340
18	225/55R19	99V	SL	233	731	7J	300
	285/60R18	116H	SL	292	799	8 1/2J	300
	275/65R18	116H	SL	279	815	8J	300
	265/70R18	116T	SL	272	829	8J	300
	265/65R18	114T	SL	272	801	8J	300
	265/60R18	110H	SL	272	775	8J	300
	255/70R18	113T	SL	260	815	7 1/2J	300
	255/60R18	112H	XL	260	763	7 1/2J	340
	245/60R18	105H	SL	248	751	7J	300
	235/65R18	110H	XL	240	763	7J	340
	235/60R18	107H	XL	240	739	7J	340
	235/55R18	100V	SL	245	715	7 1/2J	300
	235/50R18	97V	SL	245	693	7 1/2J	300
	225/60R18	100H	SL	228	727	6 1/2J	300
225/55R18	98V	SL	233	705	7J	300	
17	225/50R18	99V	XL	233	683	7J	340
	215/55R18	95H	SL	226	693	7J	300
	265/65R17	112T	SL	272	776	8J	300
	245/65R17	107H	SL	248	750	7J	300
	235/65R17	108T	XL	240	738	7J	340
	235/55R17	103V	XL	245	690	7 1/2J	340
	225/65R17	102H	SL	228	724	6 1/2J	300
	225/60R17	99H	SL	228	702	6 1/2J	300
	215/60R17	96H	SL	221	690	6 1/2J	300
	215/55R17	98V	XL	226	668	7J	340
16	215/65R16	102H	XL	221	686	6 1/2J	340

COMMERCIAL & VAN



DL01



LT 



Design for new generation MPV, light truck tire including full 31 specifications ranging from 13 to 16 inch.

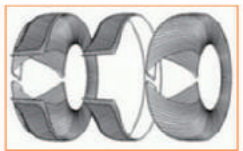


Wider tread design provides wider contacting surface to optimize driving stability and improve anti-wear performance.

Three longitudinal grooves are designed to ensure excellent steering and driving performance.



High-strengthened carcass construction design; the modified PET (PET) two-layer anti-package structure, the service life is improved 20% higher than other light truck tires.

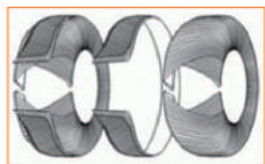


Rim	Size	LI/SS	Load Range	Section Width (mm)	Overall Diameter (mm)	Std. Rim	Standard Pressure (Kpa)
16	265/70R16LT/C	117/114Q	8	272	778	8J	450
	245/75R16LT/C	120/116Q	8	248	774	7J	450
	245/70R16LT/C	118/115R	8	248	750	7J	450
	235/85R16LT/C	123/120N	10	235	806	6.5J	550
	225/75R16LT/C	110/107R	12	223	744	6J	650
	215/75R16LT/C	117/114R	10	216	728	6J	550
	205R16LT/C	110/108Q	8	206	736	6J	450
	205/85R16LT/C	112/109R	10	202	750	5 1/2J	550
	205/75R16LT/C	110/107R	8	203	714	5 1/2J	550
	205/65R16LT/C	101/98T	8	209	672	6J	450
	195/85R16LT/C	114/110R	12	196	735	5 1/2J	650
	195/75R16LT/C	107/103R	10	196	698	5 1/2J	550
	195/65R16LT/C	99/96T	10	201	660	6J	550
	185/75R16LT/C	100/97R	8	184	684	5J	450
175R16LT/C	101/99Q	8	182	680	5J	450	
15	235/75R15LT/C	116/113S	10	235	733	6.5J	550
	225/75R15LT/C	108/104S	8	223	719	6J	450
	215/70R15LT/C	104/101R	8	221	683	6.5J	450
	205/70R15LT/C	107/103R	10	209	669	6J	550
	195/70R15LT/C	104/101S	10	201	655	6J	550
	195R15LT/C	106/104Q	8	196	693	5 1/2J	450
	185R15LT/C	103/102R	8	189	677	5 1/2J	450
	205R14LT/C	107/105N	8	208	684	6J	450
14	195R14LT/C	105/103N	8	196	668	5 1/2J	450
	185R14LT/C	102/100R	8	189	652	5 1/2J	450
	185/70R14LT/C	88/86S	6	191	614	5 1/2J	350
	175/70R14LT/C	93/90S	8	179	600	5J	450
	175/65R14LT/C	90/88T	8	177	584	5J	450
	165R14LT/C	96/95R	8	165	620	4 1/2J	450
	165/70R14LT/C	90/87S	8	170	588	5J	450
	175R13LT/C	97/95R	8	177	610	5B	450
13	165R13LT/C	94/93S	8	165	594	4 1/2B	450
	165/70R13LT/C	88/85S	8	170	562	5B	450
	155R13LT/C	90/88S	8	157	578	4 1/2B	450

DS805



LT 



Stronger carcass construction helps effectively improve endurance and loading performance.

At the time to enhance tire traction, confident to provide excellent drainage and improve wet-skid resistance.



Wider central pattern block provides strong driving performance.



Rim	Size	LI/SS	Load Range	Section Width (mm)	Overall Diameter (mm)	Std. Rim	Standard Pressure (Kpa)
16	7.50R16LT (TT)	120/116N	12PR/F	215	805	6G	670
	7.50R16LT (TL)	120/116N	12PR/F	215	805	6J	670
	7.00R16LT (TT)	115/110N	12PR/F	200	775	5 1/2F	670
	7.00R16LT (TL)	115/110N	12PR/F	200	775	5 1/2F	670
	6.50R16LT (TT)	107/102M	10PR/E	185	750	5 1/2F	560
	6.50R16LT (TL)	107/102M	10PR/E	185	750	5 1/2J	560
	6.50R16LT (TT)	110/105M	12PR/F	185	750	5 1/2J	670
	6.50R16LT (TL)	110/105M	12PR/F	185	750	5 1/2F	670
15	195/85R15LT	113/111L	8PR/D	196	693	5 1/2J	450
12	155R12LT/C	88/86N	8PR/D	157	550	4 1/2B	450



ALL SEASON

I SHOULD CHANGE MY SHOES IN SUMMER AND WINTER TIME
BUT NO NEED TO CHANGE MY TIRES FOR ALL YEAR
BECAUSE MY CAR FITS MAXIMUM DLA01

DLA01



ALL SEASON



Design of single guide pattern groove provide excellent high speed handling performance in straight line.



The capillary groove structure provides better performance of braking and handling to ensure the safety of the four seasons.



Design of thin sipes pattern on shoulder provide quiet and comfortable ride experience.

Multi-chip mold without porosity design for nice appearance.



Rim	Size	LI/SS	Load Range	Section Width (mm)	Overall Diameter (mm)	Std. Rim	Standard Pressure (Kpa)	
22	295/30ZR22	103W	XL	301	737	10 1/2J	340	
	235/55ZR19	105W	XL	245	741	7 1/2J	340	
	235/35ZR19	91W	XL	241	647	8 1/2J	340	
19	225/45ZR19	96W	XL	225	685	7 1/2J	340	
	225/35ZR19	88W	XL	230	641	8J	340	
	275/65R18	116T	SL	279	815	8J	300	
18	245/45ZR18	97W	XL	243	677	8J	340	
	245/40ZR18	107H	XL	248	653	8 1/2J	340	
	235/60R18	107H	XL	240	739	7J	340	
	235/50R18	101V	XL	245	693	7 1/2J	340	
	235/45ZR18	98W	XL	236	669	8J	340	
	225/45ZR18	95W	XL	225	659	7 1/2J	340	
	225/40ZR18	92W	XL	230	637	8J	340	
	245/65R17	107T	SL	248	750	7J	300	
	235/55R17	103H	XL	245	690	7 1/2J	340	
17	225/65R17	102H	SL	228	724	6 1/2J	300	
	225/60R17	99V	SL	228	702	6 1/2J	300	
	225/55R17	101H	XL	233	680	7J	340	
	225/50R17	98V	XL	233	658	7J	340	
	225/45ZR17	94W	XL	225	634	7 1/2J	340	
	215/60R17	96H	SL	221	690	6 1/2J	300	
	215/55R17	98H	XL	226	668	7J	340	
	205/55R17	95V	XL	214	658	6 1/2J	340	
	205/50R17	93V	SL	214	638	6 1/2J	300	
	205/45ZR17	88W	XL	206	616	7J	340	
	16	235/70R16	106H	SL	240	736	7J	300
225/60R16		98V	SL	228	676	6 1/2J	300	
225/55R16		95H	SL	233	654	7J	300	
215/70R16		104H	XL	221	708	6 1/2J	340	
215/65R16		98H	SL	221	686	6 1/2J	300	
215/60R16		99H	XL	221	664	6 1/2J	340	
215/55R16		97V	XL	226	642	7J	340	
205/60R16		96H	XL	209	652	6J	340	
205/55R16		94V	XL	214	632	6 1/2J	340	
195/55R16		91H	XL	201	620	6J	340	
15	205/65R15	94H	SL	209	647	6J	300	
	205/60R15	91H	SL	209	627	6J	300	
	195/65R15	91V	SL	201	635	6J	300	
	195/60R15	88H	SL	201	615	6J	300	
	195/55R15	85H	SL	201	595	6J	300	
	195/50R15	86H	SL	201	577	6J	300	
	185/65R15	88H	SL	189	621	5 1/2J	300	
	185/60R15	88H	XL	189	603	5 1/2J	340	
	185/55R15	82H	SL	194	585	6J	300	
	175/65R15	84T	SL	177	609	5J	300	
	165/60R15	77T	SL	170	579	5J	300	
	14	185/65R14	86T	SL	189	596	5 1/2J	300
		185/60R14	82T	SL	189	578	5 1/2J	300
175/70R14		88T	XL	177	602	5J	340	
175/65R14		82T	SL	177	584	5J	300	
165/70R14		81T	SL	170	588	5J	300	
165/65R14		79T	SL	170	570	5J	300	
165/60R14		75T	SL	170	554	5J	300	
155/65R14		75T	SL	157	558	4 1/2J	300	
13	175/70R13	82T	SL	177	576	5B	300	
	165/70R13	79T	SL	170	562	5B	300	
	155/80R13	79T	SL	157	578	4 1/2B	300	
	155/70R13	75T	SL	157	548	4 1/2B	300	

DLA02



ALL SEASON SPECIAL FOR VAN



Zigzag traversal pattern on tread edge helps the tire perform stronger traction in snow.



Stronger carcass construction helps effectively improve endurance and loading performance.



Acute angle pattern on shoulder helps obviously improve the handling performance of four seasons.

Open grooves are designed to provide excellent self-cleaning capability and outstanding traction.

Rim	Size	LI/SS	Load Range	Section Width (mm)	Overall Diameter (mm)	Std. Rim	Standard Pressure (Kpa)
16	235/65R16C	115/113R	8	242	708	7J	450
	225/65R16C	111/108R	10	234	694	6 1/2J	550
	215/75R16C	113/111R	8	217	724	6J	450
16	205/65R16C	107/105T	8	210	668	6J	450
	195/75R16C	107/105R	8	196	694	5 1/2J	450
	225/70R15C	112/109R	10	236	694	6 1/2J	550
15	215/70R15C	109/107R	8	222	679	6 1/2J	450
	215/65R15C	107/103R	10	228	657	6 1/2J	550
	195/70R15C	104/101R	10	209	651	6J	550

WINTER TIRES



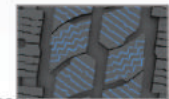
NEW
DW06



WINTER LT



Design of different types of kerf can improve the grip of tires in icy and snowy weather, and improve the braking performance on frozen road.



Design of wide lateral groove and open shoulder, help to quickly drain ice and snow, improve tire traction, and avoid sideslip.

Design of the main groove in the form of a broken line increases the contact area between the tire and snow, and improves the snow performance of the tire.



Stronger carcass construction helps effectively improve endurance and loading performance. Excellent durability, even with heavy loads.

Rim	Size	LI/SS	Load Range	Section Width (mm)	Overall Diameter (mm)	Std. Rim	Standard Pressure (Kpa)
16	235/65R16C	115/113R	8PR/D	240	712	7J	450
	225/75R16C	121/120R	/	223	744	5J	575
	225/65R16C	112/110R	8PR/D	228	698	6 1/2J	450
	215/75R16C	113/111R	8PR/D	216	728	6J	450
	215/65R16C	109/107R	8PR/D	221	686	6 1/2J	450
	205/75R16C	110/108R	8PR/D	203	714	5 1/2J	450
	205/65R16C	107/105R	8PR/D	209	672	6J	450
	195/75R16C	107/105R	8PR/D	196	698	5 1/2J	450
	195/60R16C	99/97T	6PR/C	201	640	6J	350
15	225/70R15C	112/110R	8PR/D	228	697	6 1/2J	450
	215/70R15C	109/107R	8PR/D	221	683	6 1/2J	450
	215/65R15C	104/102R	/	221	661	6 1/2J	375
	195/70R15C	104/102R	8PR/D	201	655	6J	450

NEW DW08

- HANDLING
- QUIET
- SAFE
- COMFORT
- WET GRIP

WINTER



The unique "V" pattern design of central rib improves the stability of straight driving on the snow and ice road, ensuring the safety of driving.

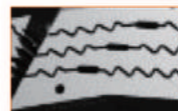


Application of ultra-low temperature compound helps ensure the softness of tire and driving safety even in -70°C condition.

The zigzag design of tire edge can effectively remove the ice water film and improve the stability.



Water suction bag is designed to store and evacuate the water rapidly so as to enhance the ice and snow performance.



Rim	Size	LI/SS	Load Range	Section Width (mm)	Overall Diameter (mm)	Std. Rim	Standard Pressure (Kpa)
19	235/35R19	87H	SL	241	647	8 1/2J	300
	245/45R18	96H	SL	243	677	8J	300
	225/45R18	91H	SL	225	659	7 1/2J	300
	225/40R18	92H	SL	230	637	8J	300
17	235/45R17	94H	SL	236	644	8J	300
	225/55R17	97T	SL	233	680	7J	300
	225/50R17	94H	SL	233	658	7J	300
	225/45R17	94H	SL	225	634	7 1/2J	300
	215/55R17	98T	XL	226	668	7J	340
	205/50R17	89H	SL	214	638	6 1/2J	300
	225/55R16	95H	SL	233	654	7J	300
16	215/65R16	102H	SL	221	686	6 1/2J	300
	215/60R16	95T	SL	221	664	6 1/2J	300
	215/55R16	93H	SL	226	642	7J	300
	205/60R16	92T	SL	209	652	6J	300
	205/55R16	91T	SL	214	632	6 1/2J	300
	195/55R16	87H	SL	201	620	6J	300
	195/65R15	91T	SL	201	635	6J	300
15	195/60R15	88T	SL	201	615	6J	300
	195/55R15	85T	SL	201	595	6J	300
	185/65R15	88T	SL	189	621	5 1/2J	300
	185/60R15	84T	SL	189	603	5 1/2J	300
	185/55R15	82T	SL	194	585	6J	300
	175/65R15	84T	SL	177	609	5J	300
	185/65R14	86T	SL	189	596	5 1/2J	300
14	185/60R14	82T	SL	189	578	5 1/2J	300
	175/70R14	84T	SL	177	602	5J	300
	175/65R14	82T	SL	177	584	5J	300
	165/70R14	81T	SL	170	588	5J	300
	165/65R14	79T	SL	170	570	5J	300
	155/65R14	75T	SL	157	558	4 1/2J	300
13	175/70R13	82T	SL	177	576	5B	300
	165/70R13	79T	SL	170	562	5B	300
	155/80R13	79T	SL	157	578	4 1/2B	300
	155/70R13	75T	SL	157	548	4 1/2B	300



DW01

- SAFE
- WET GRIP
- HANDLING
- COMFORT

WINTER



The unique "V" pattern design of central rib improves the stability of straight driving on the snow and ice road, ensuring the safety of driving.



Stud technology is applied to improve the grip.



The bionic design of wall lizard feet improves the adhesion of the ice and snow surface, with superior driving performance.

The tread with nails shortens the ice brake distance by 5%, and the snowfield brake distance by 2%.



Rim	Size	LI/SS	Load Range	Section Width (mm)	Overall Diameter (mm)	Std. Rim	Standard Pressure (Kpa)
20	275/60R20	119S	SL	279	838	8J	300
	265/60R18	110Q	SL	274	770	8J	300
	235/60R18	103Q	SL	244	734	7J	300
18	235/55R18	100T	SL	249	711	7 1/2J	300
	225/60R18	100Q	SL	232	723	6 1/2J	300
	225/55R18	98T	SL	238	701	7J	300
	265/70R17	112/118Q	10PR/E	272	804	8J	550
	265/65R17	112Q	SL	276	770	8J	300
17	235/65R17	104Q	SL	246	734	7J	300
	225/65R17	102T	SL	228	724	6 1/2J	300
	225/60R17	99T	SL	228	702	6 1/2J	300
	225/55R17	97T	SL	233	680	7J	300
	225/50R17	94T	SL	233	658	7J	300
	215/60R17	96T	SL	224	686	6 1/2J	300
	215/55R17	94T	SL	226	668	7J	300
	215/50R17	95T	XL	226	648	7J	340
	245/75R16	120/116Q	10PR/E	248	774	7J	550
	245/70R16	107Q	SL	251	746	7J	300
16	225/75R16	115/112Q	10PR/E	223	744	6J	550
	215/70R16	100T	SL	222	704	6 1/2J	300
	215/65R16	98T	SL	221	686	6 1/2J	300
	215/60R16	95T	SL	221	664	6 1/2J	300
	205/65R16	95T	SL	213	668	6J	300
	205/60R16	92T	SL	209	652	6J	300
	205/55R16	91T	SL	214	632	6 1/2J	300
	195/75R16C	96/93Q	6PR	200	695	5 1/2J	350
	195/55R16	87T	SL	208	616	6J	300
	185/75R16C	100/97Q	8PR	188	681	5J	450
	205/70R15	96T	SL	209	669	6J	300
	205/65R15	94T	SL	209	647	6J	300
	195/65R15	91T	SL	201	635	6J	300
15	195/60R15	88T	SL	201	615	6J	300
	195/55R15	85T	SL	201	595	6J	300
	185/65R15	88T	SL	189	621	5 1/2J	300
	185/60R15	84T	SL	189	603	5 1/2J	300
	185/55R15	82T	SL	189	585	6J	300
	185/70R14	88T	SL	189	616	5 1/2J	300
	185/60R14	84T	SL	189	596	5 1/2J	300
14	185/65R14	86T	SL	189	596	5 1/2J	300
	185/60R14	82T	SL	189	578	5 1/2J	300
	175/65R14	82T	SL	177	584	5J	300
	175/70R13	82T	SL	177	576	5B	300
13	165/70R13	79T	SL	170	562	5B	300
	155/80R13	79T	SL	157	578	4 1/2B	300
	155/70R13	75S	SL	160	545	4 1/2B	300

DW02



WINTER



1 Safe and stability

- The non-symmetrical pattern improves the stability when cornering and the anti-wear ability of the outer part.

2 Braking distance is shortened by 20%.

- 3D kerf design can reduce the displacement by 8% and improve the grip.

3 Professional winter compound

- Application of ultra-low temperature compound helps ensure the softness of tire and driving safety even in -70°C condition.

-70°C

4 Enjoy silent driving, more comfortable

- Chamfer edge design can effectively reduce the noise in driving.



DW02

Rim	Size	LI/SS	Load Range	Section Width (mm)	Overall Diameter (mm)	Std. Rim	Standard Pressure (Kpa)
18	245/50R18	104T	XL	253	703	7 1/2J	340
	245/45R18	96T	SL	243	677	8J	300
	235/60R18	103T	SL	240	739	7J	300
	235/55R18	100S	SL	245	715	7 1/2J	300
	235/50R18	97S	SL	245	693	7 1/2J	300
	235/45R18	94T	SL	236	669	8J	300
	235/40R18	95T	XL	241	646	8 1/2J	340
	225/60R18	100S	SL	228	727	6 1/2J	300
	225/55R18	98S	SL	233	705	7J	300
225/45R18	91S	SL	225	659	7 1/2J	300	
215/55R18	95S	SL	226	693	7J	300	
17	265/65R17	112S	SL	272	776	8J	300
	245/65R17	107S	XL	248	750	7J	340
	245/45R17	99T	XL	243	652	8J	340
	235/65R17	108T	XL	240	738	7J	340
	235/60R17	102S	SL	240	714	7J	300
	235/55R17	99S	SL	245	690	7 1/2J	300
	235/45R17	94T	SL	236	644	8J	300
	225/65R17	102T	SL	228	724	6 1/2J	300
	225/60R17	99T	SL	228	702	6 1/2J	300
	225/55R17	97T	SL	233	680	7J	300
	225/50R17	94T	SL	233	658	7J	300
	225/45R17	90T	XL	225	634	7 1/2J	340
215/60R17	96T	SL	221	690	6 1/2J	300	
215/55R17	94S	SL	226	668	7J	300	
215/50R17	91T	SL	226	648	7J	300	
16	265/70R16	112T	SL	272	778	8J	300
	245/75R16	111S	SL	248	774	7J	300
	245/70R16	107S	SL	248	750	7J	300
	235/70R16	106T	SL	240	736	7J	300
	225/55R16	95T	SL	233	654	7J	300
	215/70R16	100T	SL	221	708	6 1/2J	300
	215/65R16	98T	SL	221	686	6 1/2J	300
	215/60R16	95S	SL	221	664	6 1/2J	300
	215/55R16	93T	SL	226	642	7J	300
15	205/60R16	92S	SL	209	652	6J	300
	205/55R16	91T	SL	214	632	6 1/2J	300
	195/60R16	89S	SL	201	640	6J	300
	195/55R16	87S	SL	201	620	6J	300
	235/75R15	105T	SL	235	733	6 1/2J	300
	225/75R15	102T	SL	223	719	6J	300
	215/75R15	100S	SL	216	703	6J	300
	215/70R15	98S	SL	221	683	6 1/2J	300
	205/65R15	94T	SL	209	647	6J	300
14	195/65R15	91T	SL	201	635	6J	300
	195/60R15	88T	SL	201	615	6J	300
	195/55R15	85T	SL	201	595	6J	300
	185/65R15	88T	SL	189	621	5 1/2J	300
	185/60R15	84S	SL	189	603	5 1/2J	300
	185/70R14	88T	SL	189	616	5 1/2J	300
	185/65R14	90T	XL	189	596	5 1/2J	340
	185/60R14	82T	SL	189	578	5 1/2J	300
	175/70R14	84T	SL	177	602	5J	300
13	175/65R14	82T	SL	177	584	5J	300
	165/70R13	79T	SL	170	562	5B	300

Rim	Size	LI/SS	Load Range	Section Width (mm)	Overall Diameter (mm)	Std. Rim	Standard Pressure (Kpa)
21	275/45R21	110T	XL	273	781	9J	340
	265/45R21	108T	XL	266	771	9J	340
20	275/50R20	113T	XL	284	784	8 1/2J	340
	275/45R20	110T	XL	273	756	9J	340
	275/35R20	102T	XL	278	700	9 1/2J	340
	255/55R20	110T	XL	265	788	8J	340
	255/45R20	105T	XL	255	738	8 1/2J	340
	245/50R20	102T	SL	253	754	7 1/2J	300
	245/45R20	103T	XL	243	728	8J	340
245/40R20	99T	XL	248	704	8 1/2J	340	
19	275/40R19	105T	XL	278	703	9 1/2J	340
	265/50R19	110T	XL	277	749	8 1/2J	340
	255/55R19	111T	XL	265	763	8J	340
	255/50R19	107T	XL	265	739	8J	340
	255/45R19	104T	XL	255	713	8 1/2J	340
	245/55R19	103T	SL	253	753	7 1/2J	300
	245/45R19	102T	XL	243	703	8J	340
	235/55R19	101S	SL	245	741	7 1/2J	300
	235/35R19	91T	XL	241	647	8 1/2J	340
	225/55R19	99T	SL	233	731	7J	300
18	255/55R18	105S	SL	265	737	8J	300
	245/60R18	105S	SL	248	751	7J	300



MILITARY TIRES

DS315

MILITARY TIRES



Tread pattern helps enhance tire grip on unpaved road, the big off-road pattern can perform strong grip in muddy condition.

Open type grooves deliver excellent performance including outstanding self-cleaning, impressive driving, strong traction, improved trafficability and braking.

Tire Size	Tread Depth		Std.Rim	Section Width mm	Overall Diameter mm	Load Capacity(kg)		Std.Cold infl.Press.(kPa)	
	mm	1/32in				Road	Cross road	Road	Cross road
11R18	22.0	27.7	9.0-18	290	1000	1800	1600	450	350



DS703

MILITARY TIRES



V Shaped off-road pattern designed for special off-road vehicle helps provide excellent grip in soft and wet road condition.

Perfect trafficability, traction and braking.

Tire Size	Tread Depth		Std.Rim	Section Width mm	Overall Diameter mm	Load Capacity(kg)		Std.Cold infl.Press.(kPa)	
	mm	1/32in				Road	Cross road	Road	Cross road
12R20(TT)	22.0	27.7	9.0-20	345	1120	2000	1800	450	350
12R20(TL)	22.0	27.7	9.0-20	345	1120	2000	1800	450	350



DS706

MILITARY TIRES



Excellent comprehensive performance, optimized balance for high wear resistance, safety and economy.

Perfect performance combination for accurate steering, excellent braking and great handling.

Tire Size	Tread Depth		Std.Rim	Section Width mm	Overall Diameter mm	Load Capacity(kg)		Std.Cold infl.Press.(kPa)	
	mm	1/32in				Road	Cross road	Road	Cross road
12.5R20(TT)	22.0	27.7	9.0-20	345	1120	2000	1800	450	350
12.5R20(TL)	22.0	27.7	9.0-20	345	1120	2000	1800	450	350



DS766

MILITARY TIRES



Suitable for military vehicles, to help the vehicle run at high speed in good road condition and ensure high trafficability in severe road condition.

The longitudinal grooves are taken as main running surface and make the transversal grooves more narrow, which help improve the high speed performance.

Tire Size	Tread Depth		Std.Rim	Section Width mm	Overall Diameter mm	Load Capacity(kg)		Std.Cold infl.Press.(kPa)	
	mm	1/32in				Road	Cross road	Road	Cross road
37×12.5R16.5	14.5	18.3	8.25	315	927.6	/	1750	/	350

DOUBLESTAR

Localized brand promotion



Doublestar brand store



Global marketing activities



Doublestar Tire, Innovating the World